

Title of the Paper

(Time New roman: 14pt, Bold, Top space: 6, Bottom space: 24, Align: Centre)

Fist Author Name¹, Co-Author(s) Name²/ Co-Author Name^{1, 2}
(Time New roman: 12pt, Top space: 0, Bottom space: 0, Align: Centre)

¹ *Department One, Institution One, City One, Country One*

² *Department Two, Institution Two, City Two, Country Two*

(Time New roman: 12pt, Italic, Align: Centre)

E-mail: xxx@xxx.xx

(Time New roman: 12pt, Italic, Align: Centre)

***Marked with corresponding author's name & Mail ID**

(Time New roman: 12pt, Italic, Align: Centre)

Abstract

(Time New roman: 12pt, Italic, Bold, Top space: 24, Bottom space: 6, Align: Centre)

Sample text inserted for illustration. Your abstract should give readers a brief summary of your article with single paragraph. It should concisely describe the contents of your article, and include key terms. It should be informative, accessible and not only indicate the general scope of the article but also state the main results obtained and conclusions drawn. The abstract should be complete in itself; it should not contain undefined abbreviations and no table numbers, figure numbers, references or equations should be referred to. It should be suitable for direct inclusion in abstracting services and should not normally be more than 250 words.

(Time New roman: 11pt, Italic, align: Justify)

Keywords: *term, term, term (4-6 keywords, alphabetical arrangement)* (Time New roman: 11pt, Italic, top and bottom space: 6, Align: Justify).

Introduction

(Time New roman: 13pt, Bold, top and bottom space: 6)

In this part, state the purpose of the study. The following should be stated clearly:

- Problem to be solved?
- Any existing solutions for the problems?
- Which is the Best one?
- Limitations?
- Achievements?
- Schematic Diagram\ Graphical Abstack
- Objective
- Novelty of the work

(11-point Times New Roman, text justified)

Materials and Methods

(Time New roman: 13pt, Bold, top and bottom space: 6)

In this section, describe the methods followed and responds to the question how the problem was studied. The order is as follows:

- Description of the Site
- Description of the Experiments done
- Description of the laboratory methods
- Description of statistical methods used.

Results

(Time New roman: 13pt, Bold, top and bottom space: 6)

In this section, responds to the question what have you found. The result should be essential for discussion.

11-point Times New Roman, text justified

Discussion

(Time New roman: 13pt, Bold, top and bottom space: 6)

In this section, should have discussion corresponding to the results. To achieve good think:

- How do the results relate to the objectives outlined in the Introduction section?
- Are the results being consistent with other researchers?
- What further research would be necessary to answer the questions raised by your results?

11-point Times New Roman, Text justified

Equations

(Time New roman: 13pt, Bold, top and bottom space: 6)

Number equations consecutively with equation numbers in parentheses flush with the right margin, as in (1). First use the equation editor to create the equation. Then select the “Equation” markup style. Press the tab key and write the equation number in parentheses. To make your equations more compact, you may use the solidus (/), the exp function, or appropriate exponents. Use parentheses to avoid ambiguities in denominators. Punctuate equations when they are part of a sentence, as in

$$\int_0^{r_2} F(r, \varphi) dr d\varphi = [\sigma r_2 / (2\mu_0)] \quad (1)$$
$$\cdot \int_0^{\infty} \exp(-\lambda |z_j - z_i|) \lambda^{-1} J_1(\lambda r_2) J_0(\lambda r_i) d\lambda .$$

Conclusion

(Time New roman: 13pt, Bold, top and bottom space: 6)

In this section, you should provide clear justification for your work and indicate the uses and extension if appropriate.

11-point Times New Roman, text justified.

Figures and Tables

Positioning Figures and Tables: Place figures and tables at the top and bottom of columns. Avoid placing them in the middle of columns. Large figures and tables may span across both columns. Figure captions should be below the figures; table heads should appear above the tables. Insert figures and tables after they are cited in the text. Use the abbreviation “Figure. 1”, even at the beginning of a sentence

NOTE: Table and figures should be mentioned below to their explanations.

Table 1. Name of the Table that justify the values

(Table caption: 10-point Times New Roman, text Center, above to the Table)

Table Head	Table Column Head		
	Table column subhead	Subhead	Subhead
copy	More table copy ^a		

^a Sample of a Table footnote. (Table footnote)

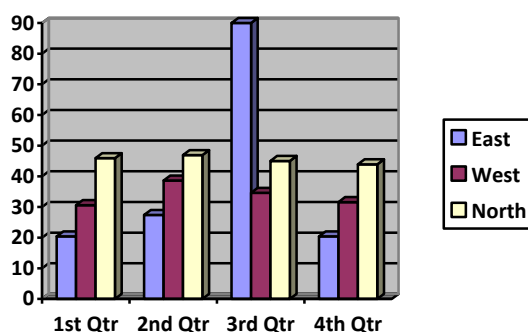


Figure 1. Example of a figure caption. (figure caption)

(Figure caption: 10-point Times New Roman, text Center, below the Figure)

NOTE: For graphical figures X and Y axis legends (heading/title) should need to be inserted.

Conflict of interest

Conflict of interest', can occur when you (or your employer or sponsor) have a financial, commercial, legal, or professional relationship with other organizations, or with the people working with them, that could influence your research.

If there is none, author should declare that there is no conflict of interest.

Acknowledgements

(Time New roman: 13pt, Bold, top and bottom space: 6)

It is optional. Acknowledgements enable you to thank all those who have helped in carrying out the research.

References

(Time New roman: 13pt, Bold, top and bottom space: 6)

In this section, References for the work which is done by author has to list out. Avoid unpublished references. Check the author names, Year of Publications, usage of et al, punctuation etc. The reference

(10-point Times New Roman, text justified with number in set bracket like [1].)

Examples:

1. **[For an article in a journal]** Goss, R. O., 1990, Economic policies and seaports: Strategies for port authorities. *Maritime Policy and Management*, 17(4), 273-287.
2. **[Book]** Frankel, E. G., 1987, *The World Shipping Industry* (London, U.K.: Croom Helm).

3. **[Chapter in a book]** Friesz, T. L., 1981, The multi objective optimization in transportation: the case of equilibrium network design. In: Organizations: Multiple Agents with Multiple Criteria, edited by J. N. Morse. *Lecture Notes in Economics and Mathematical Systems*, Vol. 190 (New York: Springer-Verlag), pp. 116-127.
4. **[Report, proceedings, and unpublished literature (a)]** Tan, H., Gershwin, S., and Athans, M., 1979, Hybrid optimization in urban traffic networks. MIT Report Dot-TSC-RSPA-79-7.
5. **[Report, proceedings, and unpublished literature (b)]** Asakura, Y., and Sasaki, T., 1990. Formulation and feasibility test of optimal road network design model with endogenously determined travel demand. Proceedings of the 5th World Conference on Transport Research, Yokohama, Japan, July, pp. 351-365
6. **[Report, proceedings, and unpublished literature (c)]** Yang, H., Bell, M. G. H., and Meng, Q., 1997, Equilibrium zone reserve capacity under network capacity constraints. Working paper, The Hong Kong University of Science and Technology.
7. **[Newspaper or magazine]** Smith, A., 1996, Labour ditches plans to re-regulate buses. Financial Times, 30 December.
8. **[Internet source (with title, date of access and the universal resource locator in full)]** UNO, Charter of the United Nations (Preamble), Date of access: 21/11/2012. <http://www.un.org/en/documents/charter/preamble.shtml>.
9. **[Government legislation (a)]** US CONGRESS, Senate Committee on Foreign Relations, 1956, The Mutual Security Act of 1956, 84th Congress, second session, report 2273.
10. **[Government legislation (b)]** UNITED KINGDOM PARLIAMENT, Committee on the Working of the Monetary System [Radcliffe Committee] 1960, Principal Memoranda of Evidence, vol. 2, Cmd 1958.
11. **[Government legislation (c)]** UNITED NATIONS GENERAL ASSEMBLY, Secretariat for Economic Affairs, 1951, Methods of Financing Economic Development in Less Developed Countries, report II B2.

NOTE: Citation of the reference used in the manuscript should need to be in numbering format [1, 2] instead of using reference author's name (john 1989).

Reference information in the reference part should need to be modified according to the citation number instead of using alphabetical order.

General Instructions

1. Article uniqueness should be above 80%
2. **Title:** not too long below 20 words, Times New Roman 14-point, boldface type, centered. Capitalize the first letter of nouns, pronouns, verbs, adjectives, and adverbs; do not capitalize articles, coordinate conjunctions, or prepositions.
3. File format should in word (doc, docx)
4. Abstract should 250 words with keywords (4 to 6)
5. Page Layout: 8.5 x 11-inch paper; for A4 paper
6. Use Times News Roman font
7. Follow the Title Case in all the section level headings
8. First-level headings: Times New Roman 13-point boldface, Title Case, Justify, Top and Bottom: 6pt.
9. Second-level headings: Times New Roman 12-point boldface, Title Case, Justify, Top and Bottom: 6pt.
10. Third-level headings: Times New Roman 11-point boldface, Title Case, Justify, Top and Bottom: 6pt.
11. Reference: Use Times New Roman 10-point type.
12. Acknowledgements should be brief and placed at the end of the text before the references.
13. All paragraphs should be indented 1 pica (approximately 0.17-inch or 0.422 cm).
14. Author names and affiliations are to be centered beneath the title and printed in Times New Roman 12-point, non-boldface type. Multiple authors may be shown in a two or three-column format, with their affiliations below their respective names. Affiliations are centered below each author name, italicized, not bold. Include e-mail addresses.
15. Same Author should not be presented more than 2 articles in a same Issue.

16. Don't use enter key in the article title. Please Mention the title in single or double line
17. Mention the Author names and Affiliations as per the given Format below,

Author 1, Author 2, Author 3..etc

Affiliation 1

Affiliation 2

Affiliation 3

.

.

etc

(All Affiliations should be in the format of "Department, University/Organization, place, country").

18. As per Journal standard Roles/Degree are not allowed in Author group and affiliations. Kindly remove the roles/degree in author group and affiliations.
19. Figures and Tables used in the manuscript should be in sequential order with respective captions and citations. (Individual caption should be present for all figures/tables)
20. Update all figures as whole images instead of grouping multiple elements together.
21. Figures should not be Fig 1a, 1b, 1c..etc. Include all the part labels (a, b, c...etc) inside the respective images and ensure all the figures are whole/single images like Figure 1, Figure 2, Figure 3..etc with individual captions as "Figure 1. Caption content; Figure 2. Caption Content...etc)
22. Kindly avoid using Enter key in tables. Create an individual rows and columns for every line.
23. Tables should be in Editable format instead of image format. (By using Insert Table/Table design Tab you can modify)
24. Mention all the formulas in equation format by using insert-Equation option. (Note: Please note that you can frame the equation as equation mode in word doc. by using Insert equation option (i.e., In word doc., Near by Home, Insert option will be there, After You click the Insert option You can see the symbol phi at last, in which you can edit your equation by clicking the insert new equation option.)
25. Both reference citations as well as references in reference list should be in Numbered format as like [1], [2], [3],..etc.
26. Need to mention at least 20 References.
27. Reference part should be update as per the Author Guideline.
Author name, initial, year, title of the paper. Journal name, Volume/issue, page number, Link
"For example: [For an article in a journal] [1] Goss, R. O., 1990, Economic policies and seaports: Strategies for port authorities. *Maritime Policy and Management*, 17(4), 273-287, <https://www.texilajournal.com/>"
28. Minimum word count of the article should be above 3000 words.
29. All the sections - i.e., "Methods, Results, Discussion" should be with statistical data.
30. Conflict of interest, Ethical Approval, Author Contributions should be present in the manuscript.